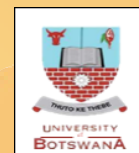




CONSORTIUM FOR INTERNATIONAL MANAGEMENT, POLICY AND DEVELOPMENT

CO-HOSTED BY:



In Partnership with

University of Botswana, College of Social Sciences | Department of Political and
Administrative Studies and Centre of Specialization in Public Administration and
Management (CESPAM)

In addition to other organizations and institutions

Pre-Conference Meeting

June 21 - 23, 2018

Johannesburg, South Africa

Turfontein Race Course Conference Center

Eleventh International Conference

June 26 - 28, 2018

Gaborone, Botswana

University of Botswana Conference Centre

CONFERENCE THEME

PRIORITIES FOR THE FUTURE:
GOOD GOVERNANCE, HEALTH AND SAFETY,
SOCIAL JUSTICE AND ECONOMIC EQUITY



WELCOME TO BOTSWANA

A country located in the southern region of Africa with a flat landscape covered by about 80% of the Kalahari Desert—a large semi-arid sandy savannah extending 900,000 square kilometers. Vastly known as one of Africa's most popular and exclusive safari destinations, Botswana is home to more than two-million residents. One of the most fascinating landmarks other than the Kalahari Desert is the Okavango Delta—one of African's last remaining great wildlife habitat and provides refuge to an extensive concentration of game, and the Chobe National Park—located in northern Botswana, inland of the Okavango Delta, and known for its large herds of elephants and Cape buffalo.

Botswana gained its independence in 1966 and formerly, was known as the British protectorate of Bechuanaland. While English is the official language and Setswana the national language, more than 20 other languages are spoken throughout Botswana—Setswana is vastly spoken as the mother tongue. The word for many residents in Botswana is Batswana. The United States considers Botswana an excellent partner and an advocate of and model for stability in Africa. In its 52 years since independence, Botswana has consistently maintained a democratic government, responsibly managed its natural resources, and invested in its people and infrastructure. The bilateral relationship is strong and grounded in a shared commitment to democracy, good governance, and human rights. The United States and Botswana also share an interest in ensuring the sustainability of Botswana's success by deepening economic diversification and promoting regional economic growth and development

Pula is the local currency in Botswana and is also the nation's motto and shield—shouted out during special events, including political events, to show support and enthusiasm as well as shouted during sporting matches whenever the national team, 'The Zebras' scores a goal. On the national coat of arms of Botswana, the word 'pula' appears as symbol of significance that embraces many meanings. In its literal sense, it means 'let there be rain' in a country that is mostly semi-arid where rainfall is precious and appreciated as a blessed event.

HOST TOWN

Gaborone is the capital and largest city in Botswana and was formerly known as Gaberones before Botswana gained independence from Great Britain in 1966. Its history, however, extends back much further than 1966. Gaborone is named after Chief Gaborone, who led his tribe to this area from the Magaliesberg around 1880. Gaborone is also the center of commerce in Botswana, with numerous important companies headquartered in the capital as well as most of the nation's financial institutions.

The Gaborone Dam, the water source for Gaborone, is in the foundation of Gaborone itself. In a dry region, water is of critical importance. The Gaborone Dam was created as a necessary precondition for the growth of the city. It is located by the edge of the city, set among hills and dense bush, is the city's main water source, Gaborone Dam.

ACTIVITIES

Gaborone has various activities for overlanders and tourists who find themselves traveling there often and also for locals who visit while making convenient stop-overs between north points, like Kasane, Botswana, and south points like Johannesburg, South Africa. These activities include climbing Kgale Hill, one of the most prominent landmarks in the city overlooking the Gaborone Dam; shopping for authentic souvenirs and handicrafts at Botswanacraft Marketing, Kalahari Quilts, and Thamaga and Gabane Pottery, to name a few; farmer's markets, held on the last Sunday of each month at the Bull and Bush, one of the city's oldest restaurants

SIGHT VIEWING

Game drives are one of the most populate sight viewings in the city for African wildlife. The Gaborone Game Reserve is popular for herbivore and bird watchers and is a popular picnic spot. The Mokolodi Nature Reserve is another popular place and is a must-see destination located just 20 kilometers south of the city. The Lion Park Resort is also popular and is known among locals for its amusement park and prides for viewing.



Dr. Peggy Valentine,
CIMPAD President and Conference General Chair

Dear Conference Participant:

Welcome to the Consortium for International Management Policy and Development (CIMPAD) 11th Biannual International Conference in the beautiful city of Gaborone, Botswana. It is indeed a joy to hold this conference in partnership with our friends of the University of Botswana and the Centre of Specialization in Public Administration Studies (CESPAM). We are excited that you have joined us in this beautiful and historic place to share information, build supportive networks, discuss ideas and ultimately advance the ideals and practice of governance in sub-Saharan Africa.

As a nonprofit organization, CIMPAD has sought to strengthen and promote public sector leadership and management in the sustainable development of communities since 1997. Conference locations have been chosen for their significance in the context of freedom for Africa. Past conferences have built institutional linkages, promoted faculty exchanges, encouraged collaborative research and program activities among Africans, African Americans and others who are committed to empowering citizens with knowledge, tools and resources for a better quality of life. We expect this conference too will leave its indelible mark on all in attendance through the sharing of research, policies and best practices for addressing issues affecting our societies.

A special acknowledgement is given to Professors David Sebudubu, Baakile Motshegwa of the Department of Political and Administrative Studies, Dorothy Mpabanga of the CESPAM and other members of the local planning committee who have welcomed us with open arms and support in planning this event. We are grateful for the work of Professor Sylvester Murray, Conference Chair, Karyn Onyeneho, Program Committee Chair, and other members of the US planning committee for their partnership with the local committee in planning an exciting conference program. We thank them immensely.

We thank you for joining us. Let us network, get to know each other and build meaningful relationships. I look forward to our discussions and hope that you will enjoy the conference.

Sincerely,

Peggy Valentine, Ed.D.
General Chair, CIMPAD and
Dean of Health Sciences,
Winston-Salem State University



Professor Sylvester Murray,
CIMPAD Conference Chair and General Conference Chair Emeritus

Dear Conference Participant:

I am very pleased to welcome you to this 11th International Conference on Public Management, Policy and Development that is made possible through the collective efforts of CIMPAD, CESPAM and the University of Botswana, particularly the Department of Political and Administrative Studies, whose Head is Bashi Mothusi, Ph.D., one of my students many years back at Cleveland State University in Ohio, USA. Thank you all for agreeing to partner with us. It seems to me that every speech or greeting over the last 21 years that we have been convening CIMPAD Conferences, began with a statement relating to “Change”. In fact, our 11 conference themes have always included phrases like improvement, development, measurement, investment, inclusion, and advancement—as they relate to governmental change.

We meet this year in Botswana and emphasis again is on a change of priorities. Of course, governments have been changing. We usually measure government in two spheres: political and administrative. There has been significant ongoing political change in Africa and in North America in the last three years since the 10th CIMPAD Conference. I am hoping that the participants in our conference here in Botswana will reflect on these political (policy) changes and debate fully on how the administrative sector must change to professionally accommodate them. Our organized debates should be centered on our conference theme: “Priorities for the Future: Good Governance, Health and Safety, Social Justice and Economic Equity.” Thank you all for agreeing to partner with us and for your participation in the submission of papers and in audience participation.

Sincerely,

/s/ Professor Sylvester Murray, MGA, MA
Conference Chair, CIMPAD
Conference General Chair Emeritus, CIMPAD



Lecturer Bashi Mothusi
Head of Department, Political & Administrative Studies
Faculty of Social Sciences, University of Botswana

Dear Conference Participant:

I feel greatly honoured and privileged to welcome you to the capital city of Botswana, Gaborone, and more specifically, to the University of Botswana, the Faculty of Social Sciences and the Department of Political and Administrative Studies.

This is an international conference co-hosted by the University of Botswana and the Consortium for International Management, Policy and Development (CIMPAD). The University of Botswana is represented by the Department of Political and Administrative Studies, and its affiliated agency, the Centre of Specialization in Public Administration and Management (CESPAM). It is the first time that the two institutions have collaborated and co-hosted an international conference. I think that this collaboration must be celebrated as it signifies the establishment of a long-term relationship between the two entities.

The conference is held under a very interesting and tricky theme: "Priorities for the future: Good governance, health and safety, social justice and economic equity". This theme has been broken down into several sub-themes which will make it easier for all of us to follow the discussions. I had an opportunity to review some of the abstracts which were submitted at the beginning of the year and I must say, they were of good quality. I, therefore, have no doubt in my mind that we are going to have robust and enlightening discussions on issues that affect us directly on a daily basis. It is through a conference of this nature that we can learn from each other and expand the frontiers of knowledge.

I wish you good luck in your deliberations and once again, welcome to the University of Botswana and enjoy your stay in Gaborone.

Sincerely,

/s/ Lecturer Bashi Mothusi, PhD
Head of Department,
Political and Administrative Studies,
Faculty of Social Sciences,
University of Botswana

PRE-CONFERENCE MEETING

VENUE: Turfontein Race Course Conference Centre, Johannesburg, South Africa
THEME: Priorities for the Future: Good Governance, Health and Safety, Social Justice, & Economic Equity
DATE: Thursday, June 21 to Sunday, June 23, 2018

CONFERENCE SYNOPSIS

In the global spectrum and at national levels, good governance is a critical component to driving change, fostering collective partnerships, and building sustainability across various enterprises. It is the impetus of social justice, economic equity, and health and safety policies and laws and that which serves as the fortitude to bridging connections. The pre-conference centers on priorities for the future in discussing these components through the exchange of research and knowledge, experiences, and best practices among public and private professionals, organizations, and academicians. The pre-conference will give attendees a robust picture of what to expect for the 11th International CIMPAD Conference and post-conference.

SPECIAL EVENTS:

Site visit of Mogale City Local Municipality Projects
Visit the Mandela family to pay tribute and tour Hector Peterson Memorial
Tour the Cradle of Human Kind Museum

SPEAKERS:

Professor W.R. Nyabeze

Management of Dams on Zambezi River for Hydropower, Production and Environment Protection

Ms. Dudu Maseko

Chairperson of Institute of Local Government Management,
Johannesburg Department of Community Development

Professor Peggy Valentine

CIMPAD President, Dean and Professor, Winston-Salem State University, School of Health Sciences

Professor Harvey White

CIMPAD Founder, Professor of Public Policy and Administration, University of Delaware

Mr. Lucky Leseane

Provincial Executive Officer, SALGA Gauteng

Councilor Parks Tau

SALGA President and UCLGA President

Councilor Patrick Lipuli

Executive Mayor of Mogale City

Councilor Busisiwe Modisakeng

Executive Mayor of Sedibeng District

PRE-CONFERENCE PARTNERS:

South African Local Government Association
National Department of Local Government
Institute for Local Government Management
University of the Witwatersrand, Johannesburg
University of Pretoria
University of Johannesburg

CONSORTIUM FOR INTERNATIONAL MANAGEMENT, POLICY AND DEVELOPMENT
(CIMPAD)
11TH INTERNATIONAL CONFERENCE PROGRAM

Day	Time	Session	Speaker	Venue
Welcome Reception				
Monday, June 25	7:00 pm	Welcome Reception	Lecturer Bashi Mothusi, PhD, Head of Department, Political and Administrative Studies, Faculty of Social Sciences, University of Botswana (Botswana)	Centre for Continuing Education, University of Botswana
CONFERENCE OPENING SESSION				
Director of Ceremonies: Keneilwe Mooketsane, MPhil, University of Botswana				
Tuesday, June 26	8:30am-10:30 am	Registration		
Tuesday, June 26	8:30am-9:00 am	Introduction of Guests	Professor Keoagile Thaga, PhD, Acting Dean, Faculty of Social Sciences, University of Botswana (Botswana)	University of Botswana Conference Centre
Tuesday, June 26	9:00 am-9:15 am	Welcome Remarks	Professor David Sebudubudu, PhD, Deputy Vice Chancellor, Academic Affairs, University of Botswana (Botswana)	University of Botswana Conference Centre
Tuesday, June 26	9:15 am-9:30 am	Greetings	Professor Sylvester Murray, MGA, MA, College of Urban Affairs, Cleveland State University (United States); Harvey White, PhD, School of Public Policy and Administration, University of Delaware (United States)	University of Botswana Conference Centre

CONSORTIUM FOR INTERNATIONAL MANAGEMENT, POLICY AND DEVELOPMENT
(CIMPAD)
11TH INTERNATIONAL CONFERENCE PROGRAM

Day	Time	Session	Speaker	Venue
Tuesday, June 26	9:30 am-9:35 am	Introduction of CIMPAD President, Professor Peggy Valentine, EdD	Professor Baakile Motshegwa, PhD, Department of Political & Administrative Studies, University of Botswana (Botswana)	University of Botswana Conference Centre
Tuesday, June 26	9:35 am-9:40 am	Welcome and Greetings	Professor Peggy Valentine, EdD, Dean, School of Health Sciences, Winston-Salem State University and CIMPAD President (United States)	University of Botswana Conference Centre
Tuesday, June 26	9:40 am-9:45 am	Greetings from CIMPAD Conference Chair	Professor Sylvester Murray, MGA, MA, College of Urban Affairs, Cleveland State University (United States)	University of Botswana Conference Centre
Tuesday, June 26	9:45 am-9:50 am	Musical Rendition of Botswana and USA National Anthem		University of Botswana Conference Centre
Tuesday, June 26	9:50 am-10:00 am	Entertainment	Three Tenors	University of Botswana Conference Centre
Tuesday, June 26	10:00 am-10:05 am	Introduction of Keynote Speaker	Professor David Sebudubudu, PhD, Deputy Vice Chancellor, Academic Affairs, University of Botswana (Botswana)	University of Botswana Conference Centre
Tuesday, June 26	10:05 am-10:25 am	Opening Speaker Keynote Address	Invited: Deputy Chief of Mission or Director of USAID	University of Botswana Conference Centre
Tuesday, June 26	10:25 am-10:30 am	Announcement and Closing Remarks	Dr. Velma Scantlebury, MD, Christiana Care Health System (United States)	University of Botswana Conference Centre
Tuesday, June 26	10:30 am-11:00 am	Tea Break		University of Botswana Conference Centre

CONSORTIUM FOR INTERNATIONAL MANAGEMENT, POLICY AND DEVELOPMENT
(CIMPAD)
11TH INTERNATIONAL CONFERENCE PROGRAM

Plenary Session A				
Day	Time	Session	Speaker	Venue
Tuesday, June 26	11:00 am-11:30 am	Botswana Culture	Ms. Bame Moremong, Executive Director, Brand Management (Botswana)	University of Botswana Conference Centre
Tuesday, June 26	11:30 am-12:00 pm	CIMPAD's Contributions Overtime to Connectiveness	Professor Harvey White, PhD, School of Public Policy and Administration, University of Delaware (United States)	University of Botswana Conference Centre
Tuesday, June 26	12:00 pm-12:45 pm	Disaster Management, Preparedness, and Readiness in Botswana (Office of the President, Republic of Botswana, National Disaster Management Office)	Mr. Tebogo Modiakgotla, Public Relations Officer, National Disaster Management Office (Botswana)	University of Botswana Conference Centre
Tuesday, June 26	12:45 pm-1:15 pm	Student Poster Presentations		University of Botswana Conference Centre
Tuesday, June 26	1:15 pm-2:15 pm	Lunch Served		
Plenary Session B				
Tuesday, June 26	2:15 pm-2:45 pm	The role of energy in economic growth and development	Professor Emmanuel Botlhale, PhD, Department of Political and Administrative Studies, University of Botswana (Botswana)	University of Botswana Conference Centre
Tuesday, June 26	2:45 pm-3:15 pm	Procurement of Public Service Goods in Botswana	Ms. Lady Botlhale, Capacity Building Coordinator, Public Procurement and Asset Disposal Board (Botswana)	University of Botswana Conference Centre
Tuesday, June 26	3:15 pm-3:45 pm	Tea Break and Networking		

CONSORTIUM FOR INTERNATIONAL MANAGEMENT, POLICY AND DEVELOPMENT
(CIMPAD)
11TH INTERNATIONAL CONFERENCE PROGRAM

Concurrent Session					
Track I: Policy Making, Governance and Public Administration					
Moderator: Professor Mokoko Sebola, University of Limpopo					
Day	Time	Session	Presenter	Venue	Day
Tuesday, June 26	3:30pm-5:00pm	Track I: Policy Making, Governance and Public Administration	Kimberly Richardson, Kimberly Richardson Consulting (United States)	University of Botswana Conference Centre, Room 4	At Risk: The State of Federal Grant Funding for International Programs Under the Current U.S. Administration
Tuesday, June 26	3:30pm-5:00pm	Track I: Policy Making, Governance and Public Administration	Professor Mbaiwa E. Joseph; Reniko Gondo; Oluwatoyin Dare Kolawole; Moseki Ronald Motsholapheko, University of Botswana (Botswana)	University of Botswana Conference Centre, Room 4	Institutions and Water Governance in the Okavango Delta, Botswana
Concurrent Session					
Track I: Policy Making, Governance and Public Administration					
Moderator: Professor Mokoko Sebola, University of Limpopo					
Tuesday, June 26	3:30pm-5:00pm	Track I: Policy Making, Governance and Public Administration	Nelson Sello, PhD; Gaone Modungo; Robert Molebatsi, University of Botswana (Botswana)	University of Botswana Conference Centre, Room 4	Botswana's Development Agenda: A Dichotomy of Success and Failure
Tuesday, June 26	3:30pm-5:00pm	Track I: Policy Making, Governance and Public Administration	Vincent Chakunda, Midlands State University (Zimbabwe)	University of Botswana Conference Centre, Room 4	A 'War Against Livelihoods': An Analysis of the Response of the Government of Zimbabwe to Illegal Vending
Tuesday, June 26	3:30pm-5:00pm	Track I: Policy Making, Governance and Public Administration	Professor Mokoko P. Sebola; M.A. Mamabolo, University of Limpopo (South Africa)	University of Botswana Conference Centre, Room 4	The Engagement of Beneficiaries in Farm Governance of Restituted Land: An Ideal Versus the Reality of the Beneficiary Fars in South Africa

CONSORTIUM FOR INTERNATIONAL MANAGEMENT, POLICY AND DEVELOPMENT
(CIMPAD)
11TH INTERNATIONAL CONFERENCE PROGRAM

Day	Time	Session	Presenter	Venue	Day
Tuesday, June 26	3:30pm-5:00pm	Track I: Policy Making, Governance and Public Administration	Professor Theodore J. Davis, Ph.D., University of Delaware (United States)	University of Botswana Conference Centre, Room 4	Political Attitudes and Perceptions of Botswanans: The Implications for Sustainable Human Development and Effective Governance
Concurrent Session					
Track IV: Youth, Gender and Cultural Empowerment					
Moderator: Reverend Guila Cooper, Winston-Salem State University					
Tuesday, June 26	3:30 pm-5:00 pm	Track IV: Youth, Gender and Cultural Empowerment	Harvey White, PhD, PhD, School of Public Policy and Administration, University of Delaware (United States)	University of Botswana Conference Centre, Room 3	Africa's Youth Bulge: A Threat, Opportunity or Something to be Ignore
Tuesday, June 26	3:30 pm-5:00 pm	Track IV: Youth, Gender and Cultural Empowerment	Lakisha Crews, Winston-Salem State University (United States)	University of Botswana Conference Centre, Room 3	Exploring the Cultural Relevance of Participating in Occupational Therapy Through the Lens of Individuals with Sickle Cell Anemia
Tuesday, June 26	3:30 pm-5:00 pm	Track IV: Youth, Gender and Cultural Empowerment	Kenneth A. Acheampong, PhD, University of Botswana (Botswana)	University of Botswana Conference Centre, Room 3	CEDAW's General Recommendation No. 35, Culture and Human Rights and Violence Against Women in Botswana
Tuesday, June 26	3:30 pm-5:00 pm	Track IV: Youth, Gender and Cultural Empowerment	Kagiso Makalela, University of Limpopo (South Africa)	University of Botswana Conference Centre, Room 3	Land Reform for Poverty Alleviation in the South African Ambit

CONSORTIUM FOR INTERNATIONAL MANAGEMENT, POLICY AND DEVELOPMENT
(CIMPAD)
11TH INTERNATIONAL CONFERENCE PROGRAM

Concurrent Session					
Track VI: Justice, Social Equity and Civil Society					
Moderator: Professor Esther Langston, PhD, University of Las Vegas					
Day	Time	Session	Presenter	Venue	Day
Tuesday, June 26	3:30 pm-5:00 pm	Track VI: Justice, Social Equity and Civil Society	K.C. Ngwaru, Midlands State University (Zimbabwe)	University of Botswana Conference Centre, Room 4	Neo Colonialism or Development: Re-engineering Civil Society in Zimbabwe
Tuesday, June 26	3:30 pm-5:00 pm	Track VI: Justice, Social Equity and Civil Society	Segotsi Mabogoane, Gauteng Provincial Legislature (South Africa)	University of Botswana Conference Centre, Room 4	The Role of Non-governmental Organisations (NGO's) in Policy Implementation Since the Democratic Dispensation
Tuesday, June 26	3:30 pm-5:00 pm	Track VI: Justice, Social Equity and Civil Society	Abubakar Umar Alhaji; Kabiru Garba Aminu, Federal University Kashere (Nigeria)	University of Botswana Conference Centre, Room 4	Effect of Street Begging on Political Development: A Study of Gombe In Nigeria
Tuesday, June 26	3:30 pm-5:00 pm	Track VI: Justice, Social Equity and Civil Society	Professor Kenneth Dipholo, PhD; Keneilwe Molosi-France, PhD, University of Botswana (Botswana)	University of Botswana Conference Centre, Room 4	Capacity Development for Local Councilors: A Way to Build Empowered Rural Communities in the 21 st Century
Tuesday, June 26	3:30 pm-5:00 pm	Track VI: Justice, Social Equity and Civil Society	Salphinah Vuloyimuni Ubisi, University of Limpopo (South Africa)	University of Botswana Conference Centre, Room 4	The Effectiveness of Code of Conduct in Promoting Ethical Behaviour of Public Servants in South Africa

CONSORTIUM FOR INTERNATIONAL MANAGEMENT, POLICY AND DEVELOPMENT
(CIMPAD)
11TH INTERNATIONAL CONFERENCE PROGRAM

CONFERENCE DAY TWO

Plenary Session C

Wednesday, June 27	9:00 am- 9:30 am	Public Sector Capacity Building Institutions in Botswana: CESPAM	Professor Dorothy Mpabanga, PhD, CESPAM Director, Department of Political and Administrative Studies, University of Botswana (Botswana)	University of Botswana Conference Centre
Wednesday, June 27	9:30 am-10:00 am	Disease Control and Prevention in Botswana	Dr. Michelle Roland, MD, Center for Disease Control, Botswana Country Director (Botswana)	University of Botswana Conference Centre
Wednesday, June 27	10:00 am-10:30 am	The Legal Landscape in Botswana: Reflections on Recent Case Law	Ms. Tshepho Mogapaesi, University of Botswana (Botswana)	University of Botswana Conference Centre
Wednesday, June 27	10:30 am-11:00 am	Tea Break		

Plenary Session D

Wednesday, June 27	11:00 am-11:30 am	Botswana's Diplomatic Relations with the Rest of the World	Dr. Kepabetse Lotshwao, PhD, Department of Political and Administrative Studies, University of Botswana (Botswana)	University of Botswana Conference Centre
Wednesday, June 27	11:30 am-12:00 pm	Public, Private, Partnerships in Botswana: Successes and Failures	Mr. Tumi Mogwe, Chair, Institute of Botswana Quantity Surveyors (Botswana)	University of Botswana Conference Centre

CONSORTIUM FOR INTERNATIONAL MANAGEMENT, POLICY AND DEVELOPMENT
(CIMPAD)
11TH INTERNATIONAL CONFERENCE PROGRAM

Plenary Session E				
Day	Time	Session	Presenter	Venue
Wednesday, June 27	12:15 pm-12:45 pm	Are There Effectiveness Differences between Public and Private Healthcare Processes in America? If so, Why?	Professor Peggy Valentine, EdD, Dean, Winston-Salem State University (United States) and CIMPAD President; Dr. Velma P. Scantlebury, MD, Christiana Care Health System (United States); Professor Esther Seloilwe, School of Nursing, University of Botswana (Botswana)	University of Botswana Conference Centre
Wednesday, June 27	12:45 pm-1:30 pm	Lunch Served		
Wednesday, June 27	1:30 pm-2:00 pm	Panel and Discussion: The Importance of Statistical Data in Government Programs Administration	Reverend Guila Cooper, Winston-Salem State University (United States); Kimberly Richardson, Kimberly Richardson Consulting (United States), Dr. Lucky Mokgatle, Head of Department, Statistics, University of Botswana (Botswana); Dr. Wilfred Molefe, Department of Statistics, University of Botswana (Botswana)	University of Botswana Conference Centre

CONSORTIUM FOR INTERNATIONAL MANAGEMENT, POLICY AND DEVELOPMENT
(CIMPAD)
11TH INTERNATIONAL CONFERENCE PROGRAM

Day	Time	Session	Presenter	Venue
Wednesday, June 27	2:00 pm-2:30 pm	Panel and Discussion: Social Media and Cultural Impacts on the Conduct of Government's Business	Mr. Sankura Clifford Sykes, Pontiac Michigan Public Schools (United States); Ms. Lakisha Crews, Winston-Salem State University, (United States); Dr. Sethunya Mosime, University of Botswana (Botswana); Dr. William Lesitaokana, University of Botswana (Botswana)	University of Botswana Conference Centre
Plenary Session F				
Wednesday, June 27	2:30 pm-3:00 pm	Public Enterprises as a Vehicle for Growth in Botswana: Lessons Learned	Mr. Letshego Moeng, Acting Director, Privatisation and Monitoring, Public Enterprises, Evaluation and Privatisation Agency (Botswana)	University of Botswana Conference Centre
Wednesday, June 27	3:00 pm-3:30 pm	Regulatory and Compliance Challenges in Botswana	Ms. Bopelokgale Soko, Director, Retirement Funds, Non-Bank Financial Institutions Regulatory Authority (Botswana)	University of Botswana Conference Centre
Wednesday, June 27	3:30 pm-4:00 pm	Tea Break and Networking		

Concurrent Session					
Track I: Policy Making, Governance and Public Administration					
Moderator: Professor Mpho Molomo, University of Botswana					
Wednesday, June 27	3:30pm-5:00pm	Track I: Policy Making, Governance and Public Administration	Professor Baakile Motshegwa, PhD; Professor Brother Wilwright Malema; Zibanani Kahaka; University of Botswana (Botswana)	University of Botswana Conference Centre, Room 4	Economic Governance: Developmental Trajectories, Budgeting and Diversification

CONSORTIUM FOR INTERNATIONAL MANAGEMENT, POLICY AND DEVELOPMENT
(CIMPAD)
11TH INTERNATIONAL CONFERENCE PROGRAM

Day	Time	Session	Presenter	Venue	
Wednesday, June 27	3:30pm-5:00pm	Track I: Policy Making, Governance and Public Administration	Roy Jones, Transformative Engineering Design (United States)	University of Botswana Conference Centre, Room 4	Renewable Energy Technology and its Impact on Governance and Infrastructure
Wednesday, June 27	3:30pm-5:00pm	Track I: Policy Making, Governance and Public Administration	Portia Ngcobo; Sherperd R. Malefane, University of South Africa (South Africa)	University of Botswana Conference Centre, Room 4	Governance of the Internal Control Deviations in a South African Municipal Entity (2008-2013)
Wednesday, June 27	3:30pm-5:00pm	Track I: Policy Making, Governance and Public Administration	Martinus M. Selepe, University of Limpopo (South Africa)	University of Botswana Conference Centre, Room 4	The Effects of the City of Johannesburg's Water and Electricity Billing System on Residents
Wednesday, June 27	3:30pm-5:00pm	Track I: Policy Making, Governance and Public Administration	Malesela Masenya, University of Limpopo (South Africa)	University of Botswana Conference Centre, Room 4	Corruption and Public Service Delivery: Enforcement of Ethics to Curb Transgression in the Public Sector
Wednesday, June 27	3:30pm-5:00pm	Track I: Policy Making, Governance and Public Administration	Arthur Fidelis, Chikerema; Tomy Ncube, Midlands State University (Zimbabwe)	University of Botswana Conference Centre, Room 4	Governmental Insensitivity to Accountability: Effects and Consequences for the ZANU PF Led Administration in Zimbabwe

CONSORTIUM FOR INTERNATIONAL MANAGEMENT, POLICY AND DEVELOPMENT
(CIMPAD)
11TH INTERNATIONAL CONFERENCE PROGRAM

Wednesday, June 27	3:30pm-5:00pm	Track I: Policy Making, Governance and Public Administration	Simom Ross Euku, Ross and Company; Professor Gerald K. Karyeija, Dean, Faculty of Managerial Science, Uganda Management Institute (Uganda)	University of Botswana Conference Centre, Room 4	The Role of Civil Society Matters in Good Governance and Does Democracy in African Countries: A Case of Uganda
Concurrent Session					
Track II: Health, Wellness in the Global Environment					
Moderator: Professor Michael Lischke, PhD, Wake Forest School of Medicine					
Wednesday, June 27	3:30 pm-5:00 pm	Track II: Health, Wellness in the Global Environment	Peggy Valentine, EdD, Dean, Aaron Jackson; Melicia Whitt-Glover; Elijah Onsomu; School of Health Sciences, Winston-Salem State University (United States)	University of Botswana Conference Centre, Room 1	HBCU Faculty and Students Promote Health Equity via a Mobile Clinic
Wednesday, June 27	3:30 pm-5:00 pm	Track II: Health, Wellness in the Global Environment	Karyn N. Onyeneho, MS, Department of Nutritional Sciences, Howard University (United States)	University of Botswana Conference Centre, Room 1	Globalization and Nutrition in Botswana to Combat Malnutrition and Diabetes Mellitus
Wednesday, June 27	3:30 pm-5:00 pm	Track II: Health, Wellness in the Global Environment	Velma P. Scantlebury, MD, Christiana Care Health System (United States)	University of Botswana Conference Centre, Room 1	The Increase in Chronic Kidney Disease Outcomes in Sub-Sahara Africa: An Analysis of Current Data

CONSORTIUM FOR INTERNATIONAL MANAGEMENT, POLICY AND DEVELOPMENT
(CIMPAD)
11TH INTERNATIONAL CONFERENCE PROGRAM

Day	Time	Session	Presenter	Venue	
Wednesday, June 27	3:30 pm-5:00 pm	Track II: Health, Wellness in the Global Environment	Vanessa Duren-Winfield, PhD via Proxy: Reverend Guila Cooper, School of Health Sciences, Winston-Salem State University (United States)	University of Botswana Conference Centre, Room 1	Development of an Evidence-based CVD Risk Prevention Program to Promote Healthy Lifestyle Behaviors among African American College Students
Wednesday, June 27	3:30 pm-5:00 pm	Track II: Health, Wellness in the Global Environment	Gregory Ramodiane; Nelson Sello, University of Botswana (Botswana)	University of Botswana Conference Centre, Room 1	The Impact of Tobacco on Health and Environment in Developing Countries
Concurrent Session					
Track V: Immigration, Productivity and Skills Development					
Moderator: Thekiso Molokwane, PhD, North West University					
Wednesday, June 27	3:30 pm-5:00 pm	Track V: Immigration, Productivity and Skills Development	Margaret Kemigisa; Rose B. Namara, PhD, Uganda Management Institute (Uganda)	University of Botswana Conference Centre, Room 2	Reaping the Benefits of Capacity Building of Local Council Courts (LCCs) in Uganda: A Foundation for Transformation Leadership for Policy Advocacy

CONSORTIUM FOR INTERNATIONAL MANAGEMENT, POLICY AND DEVELOPMENT
(CIMPAD)
11TH INTERNATIONAL CONFERENCE PROGRAM

Day	Time	Session	Presenter	Venue	Day
Wednesday, June 27	3:30 pm-5:00 pm	Track V: Immigration, Productivity and Skills Development	Taderera Hebert Chisi, Midlands State University (Zimbabwe)	University of Botswana Conference Centre, Room 2	The Modern State and Ethnic Challenges Created by the Colonial Resettlement Programmes: A Case of the Hlengwe-Karanga Conflicts in the South-East Lowveld of Zimbabwe, 1950s-2014
Wednesday, June 27	3:30 pm-5:00 pm	Track V: Immigration, Productivity and Skills Development	Richard R. Mwaipungu, Sansutwa Simtali Limited (Tanzania)	University of Botswana Conference Centre, Room 2	Challenges in Management and Deployment of East African Region Natural Capital for Sustainable Economic Development of Its Citizen: Tanzania Case Study
Wednesday, June 27	3:30 pm-5:00 pm	Track V: Immigration, Productivity and Skills Development	Professor Mokoko Sebola, PhD, University of Limpopo (South Africa)	University of Botswana Conference Centre, Room 2	Refugees and Immigrants: The Afro and Eurocentric Approaches to Humanity of the Received Immigrants
Wednesday, June 27	3:30 pm-5:00 pm	Track V: Immigration, Productivity and Skills Development	Nthathi Rametse, PhD, RMIT University (Australia)	University of Botswana Conference Centre, Room 2	Entrepreneurial motivations and capabilities of migrant entrepreneurs in Australian migrants
Wednesday, June 27	3:30 pm-5:00 pm	Track V: Immigration, Productivity and Skills Development	Thuto Mahlanza, DBA, University of Botswana (Botswana)	University of Botswana Conference Centre, Room 2	Botswana's Immigration Policy: Brave or Foolish?

CONSORTIUM FOR INTERNATIONAL MANAGEMENT, POLICY AND DEVELOPMENT
(CIMPAD)
11TH INTERNATIONAL CONFERENCE PROGRAM

Concurrent Session					
Track IV: Youth, Gender and Cultural Empowerment					
Moderator: Roy Jones, Transformative Engineering Design					
Wednesday, June 27	3:30 pm-5:00 pm	Track IV: Youth, Gender and Cultural Empowerment	Professor Dorothy Mpabanga, University of Botswana (Botswana)	University of Botswana Conference Centre, Room 3	African Women and the General Social Crisis in Africa: The Case of Botswana
Wednesday, June 27	3:30 pm-5:00 pm	Track IV: Youth, Gender and Cultural Empowerment	Professor Sinval B. Kahn, University of South Africa (South Africa); Kgomoiso Taunyane, National Department of Tourism (South Africa)	University of Botswana Conference Centre, Room 3	An institutional culture for Generation Y at the National Department of Tourism
Wednesday, June 27	3:30 pm-5:00 pm	Track IV: Youth, Gender and Cultural Empowerment	Mandiedza Parichi, PhD, Midlands State University (Zimbabwe)	University of Botswana Conference Centre, Room 3	Interrogating the double-bind dilemma of Zimbabwean transnational mothers in selected southern African countries in the period 2000 to 2016.
Wednesday, June 27	3:30 pm-5:00 pm	Track IV: Youth, Gender and Cultural Empowerment	Keneilwe Mooketsane, MPhil; Keratilwe Bodilenyane, MA; Professor Baakile Motshegwa, PhD, University of Botswana (Botswana)	University of Botswana Conference Centre, Room 3	Gender Equality in Botswana: Opportunities and Challenges

CONSORTIUM FOR INTERNATIONAL MANAGEMENT, POLICY AND DEVELOPMENT
(CIMPAD)
11TH INTERNATIONAL CONFERENCE PROGRAM

Day	Time	Session	Speaker	Venue
CONFERENCE DAY THREE				
Plenary Session G				
Thursday, June 28	8:30 am-9:30 am	How Should Tertiary Education Respond to Calls for Relevance?: Some Reflections	Professor Richard Tabulawa, Director Centre for Continuing Education, University of Botswana (Botswana)	University of Botswana Conference Centre
Thursday, June 28	9:30 am-10:00 am	Tea Break		
Thursday, June 28	10:00 am-10:15 am	Introduction of Closing Session	Professor Peggy Valentine, EdD, Dean, School of Health Sciences, Winston-Salem State University and CIMPAD President (United States); Professor Baakile Motshegwa, PhD, Department of Political and Administrative Studies, University of Botswana (Botswana)	University of Botswana Conference Centre
Thursday, June 28	10:15 am-10:30 am	Conference Report of the Consortium for International Management, Policy, and Development (CIMPAD)	Rappouter Mokaloba, MA, University of Botswana (Botswana)	University of Botswana Conference Centre
Thursday, June 28	10:30 am-10:40 am	Introduction of Deputy Vice Chancellor, Academic Affairs, University of Botswana	Lecturer Bashi Mothusi, PhD, Head of Department, Political and Administrative Studies, Faculty of Social Sciences, University of Botswana	University of Botswana Conference Centre

CONSORTIUM FOR INTERNATIONAL MANAGEMENT, POLICY AND DEVELOPMENT
(CIMPAD)
11TH INTERNATIONAL CONFERENCE PROGRAM

Thursday, June 28	10:40 am-11:00 am	Vote of Thanks	Professor David Sebudubudu, PhD, Deputy Vice Chancellor, Academic Affairs, University of Botswana (Botswana)	University of Botswana Conference Centre
Thursday, June 28	11:00 am-11:10 am	Closing Remarks	Lecturer Bashi Mothusi, PhD, Head of Department, Political and Administrative Studies, Faculty of Social Sciences, University of Botswana	University of Botswana Conference Centre
Thursday, June 28	11:10 am-12:00 pm	Conference Evaluation Announcement and Survey Questionnaire	Reverend Guila Cooper, Director of Alumni Relations & Development for the School of Health, Winston-Salem State University (United States) and Karyn N. Onyeneho, MS, Howard University, Department of Nutritional Sciences (United States)	University of Botswana Conference Centre
Thursday, June 28	12:00 pm- 1:00 pm	Lunch Served		University of Botswana Conference Centre
Thursday, June 28	1:00 pm-2:00 pm	CIMPAD Annual Meeting	Professor Peggy Valentine, EdD, Dean, School of Health Sciences, Winston-Salem State University and CIMPAD President (United States)	University of Botswana Conference Centre

CONSORTIUM FOR INTERNATIONAL MANAGEMENT, POLICY AND DEVELOPMENT
(CIMPAD)
11TH INTERNATIONAL CONFERENCE PROGRAM

Concurrent Session					
Track I: Policy Making, Governance and Public Administration					
Moderator: Professor Sinval B. Kahn, University of South Africa					
Thursday, June 28	2:00 pm-3:30 pm	Track I: Policy Making, Governance and Public Administration	Rose B. Namara, PhD, Uganda Management Institute (Uganda)	University of Botswana Conference Centre, Room 4	Strength and Weaknesses of Administering Justice using the Community Service Orders Initiative in Uganda
Thursday, June 28	2:00 pm-3:30 pm	Track I: Policy Making, Governance and Public Administration	Kaelo Molefhe, PhD; Dorothy Mpabanga, PhD, University of Botswana (Botswana)	University of Botswana Conference Centre, Room 4	Public Sector Management in Botswana: A Critical Appraisal
Thursday, June 28	2:00 pm-3:30 pm	Track I: Policy Making, Governance and Public Administration	Kgalema Mashamaite, Kagiso R. Moloto; M. Godfrey Manamela, University of Limpopo (South Africa)	University of Botswana Conference Centre, Room 4	South Africa's National Development Plan: Unlocking the Potential of Entrepreneurship and Small Businesses
Thursday, June 28	2:00 pm-3:30 pm	Track I: Policy Making, Governance and Public Administration	Professor Sylvester Murray, MGA, MA, College of Urban Affairs, Cleveland State University (United States)	University of Botswana Conference Centre, Room 4	Economic Policy Making and Rule of Law: Non-enforcement of Government Regulation Leads to Death of 14 Employees
Thursday, June 28	2:00 pm-3:30 pm	Track I: Policy Making, Governance and Public Administration	William Anong, PhD, Winston-Salem State University (United States)	University of Botswana Conference Centre, Room 4	Blood Group Identification Card May Help Rural Communities
Concurrent Session					
Track III: Tertiary Education, Research and Technology					
Moderator: Barbara Kindred, MBA, MC, Professional Contract Management					
Thursday, June 28	2:00 pm-3:30 pm	Track III: Tertiary Education, Research and Technology	Sankura Clifford Sykes, Pontiac Michigan Public Schools (United States)	University of Botswana Conference Centre, Room 2	The Urgency of Developing a Native Centered Arts Infused Curriculum

CONSORTIUM FOR INTERNATIONAL MANAGEMENT, POLICY AND DEVELOPMENT
(CIMPAD)
11TH INTERNATIONAL CONFERENCE PROGRAM

Thursday, June 28	2:00 pm-3:30 pm	Track III: Tertiary Education, Research and Technology	Chadzimula O. Molebatsi, University of Botswana (Botswana)	University of Botswana Conference Centre, Room 2	Towards Transformative Tertiary Education Futures for Botswana
Thursday, June 28	2:00 pm-3:30 pm	Track III: Tertiary Education, Research and Technology	Mpho Letima, Durban University of Technology (South Africa)	University of Botswana Conference Centre, Room 2	SWIFT-CODES: The Use of Technology to Close the Gender Gap. Experiences from Lesotho
Concurrent Session					
Track VI: Justice, Social Equity and Civil Society					
Moderator: Professor Dorothy Mpabanga, University of Botswana					
Thursday, June 28	2:00 pm-3:30 pm	Track VI: Justice, Social Equity and Civil Society	Moji Ruele, PhD, University of Botswana (Botswana)	University of Botswana Conference Centre, Room 1	Redefining Post-African Political Governance through a Contextual Public Theological Method of the Hermeneutical Circle
Thursday, June 28	2:00 pm-3:30 pm	Track VI: Justice, Social Equity and Civil Society	Kumbirai C. Ngwaru, Midlands State University (Zimbabwe)	University of Botswana Conference Centre, Room 1	Global Capital Versus Local Interests: The Dilemma of African Political Leaders
Thursday, June 28	2:00 pm-3:30 pm	Track VI: Justice, Social Equity and Civil Society	Brian Dube, Midlands State University (Zimbabwe)	University of Botswana Conference Centre, Room 1	Unpacking the Evidentiary Regime in Election Petitions in Zimbabwe
Thursday, June 28	2:00 pm-3:30 pm	Track VI: Justice, Social Equity and Civil Society	Douglas Singiza, PhD, The Judiciary of Uganda (Uganda)	University of Botswana Conference Centre, Room 1	The Centralization of Town Clerks in Uganda's Urban Local Governments: A Skills Development Dilemma for Employment and Productivity

CONSORTIUM FOR INTERNATIONAL MANAGEMENT, POLICY AND DEVELOPMENT
(CIMPAD)
11TH INTERNATIONAL CONFERENCE PROGRAM

Thursday, June 28	2:00 pm-3:30 pm	Track VI: Justice, Social Equity and Civil Society	Kagiso Makalela, University of Limpopo (South Africa)	University of Botswana Conference Centre, Room 1	Community Participation in a Democratic Dispensation: A Sine Quo Non for Integrated Development Planning in Lepelle-Nkumpi Local Municipality
-------------------	-----------------	--	---	--	---

GALA NIGHT

Day	Time	Session	Speaker	Venue
Thursday, June 28	7:00 pm-7:05 pm	Introduction of Guests	Lecturer Bashi Mothusi, PhD, Head of Department, Political and Administrative Studies, Faculty of Social Sciences, University of Botswana	Cresta President Hotel (Main Mall)
Thursday, June 28	7:05 pm-7:35 pm	Welcome Remarks	Professor David Norris, PhD, Vice Chancellor, University of Botswana (Botswana)	
Thursday, June 28	7:35 pm-8:00 pm	Address by CIMPAD and University of Botswana Program Committee Chair	Peggy Valentine, EdD, CIMPAD President (United States) and Baakile Motshegwa, PhD, University of Botswana (Botswana)	
Thursday, June 28	8:00 pm-8:30 pm	Entertainment		
Thursday, June 28	8:30 pm-8:35 pm	Introduction of Keynote Speaker	Lecturer Bashi Mothusi, PhD, Head of Department, Political and Administrative Studies, Faculty of Social Sciences, University of Botswana	
Thursday, June 28	8:35 pm-8:45 pm	Keynote Speaker	Dr. Gloria Somolekae, Former Deputy Minister of Finance and Development Planning (Botswana)	
Thursday, June 28	8:45 pm-8:50 pm	Introduction of Deputy Vice Chancellor, Academic Affairs, University of Botswana	Professor Keoagile Thaga, Dean, Faculty of Social Sciences, University of Botswana (Botswana)	
Thursday, June 28	8:50 pm-9:10 pm	Closing Remarks	Professor David Sebudubudu, PhD, Deputy Vice Chancellor, Academic Affairs, University of Botswana (Botswana)	Cresta President Hotel (Main Mall)
Thursday, June 28	9:10 pm-9:15 pm	Dinner Served		
Thursday, June 28	9:15 pm-10:00 pm	Entertainment		

CIMPAD CONFERENCE LEADERSHIP AND PROGRAM PLANNING COMMITTEE



PROFESSOR PEGGY VALENTINE, CIMPAD President and General Chair (USA)

Professor Peggy Valentine is Dean and Professor, School of Health Sciences at Winston-Salem State University, with educational programs in Clinical Laboratory Science, Exercise Physiology, Healthcare Management and Healthcare Administration, Nursing, Occupational Therapy, Physical Therapy and Rehabilitation Counseling. Her clinical experiences include registered nurse and physician assistant. She received the Doctor of Education Degree from Virginia Tech, the Master of Arts Degree and Bachelor of Science Degree from Howard University. She is listed in "Who's Who of American Women," and was honored as "Educator of the Year" by the American Academy of Physician Assistants. She was elected Fellow in the

Association of Schools of Allied Health Professions, and Howard University Faculty Senate honored her for "Outstanding Contributions to the African Diaspora". Professor Valentine has conducted research on homeless and minority issues. She has published in refereed journals, textbooks, and HIV/AIDS training manuals. She serves on the Board of Trustees for Novant Health Systems, Board of Directors for the North Carolina Center for Public Policy Research, Board of Directors for the National Society of Allied Health, Board of Directors for SciWorks, Advisory Board for Ronald McDonald House and the Board of Directors for SG Atkins Community Development Corporation of Winston-Salem. Since 2011, she has served as General Chair for the Consortium for International Management Policy & Development.

PROFESSOR BERHANU MENGISTU, CIMPAD Vice President (USA)

Professor Berhanu Mengistu is a Professor of Public Management and Policy in the College of Business and Public Administration at Old Dominion University in Norfolk, Virginia. Professor Mengistu has served as chair and co-chair of CIMPAD's bi-annual conferences as well as edited the proceedings of the Ghanaian and Ethiopian conferences. Professor Mengistu has been a Fulbright scholar in the Republic of South Africa (1997), Ethiopia (2001), and Ukraine (2004). Professor Mengistu was honored in co-chairing the 2013 conference of CIMPAD in Namibia. Dr. Berhanu currently serves as the Vice President for the Consortium for International Management, Policy & Development.



PROFESSOR SYLVESTER MURRAY, Conference Chair & General Chair Emeritus (USA)

Professor Sylvester Murray is a Professor of Urban Studies and Public Administration. Professor Murray's specialties are budgeting, urban administration and management. He is a former city manager of San Diego, California, Cincinnati, Ohio, Ann Arbor, Michigan and Inkster, Michigan. He was also manager of government consulting at Coopers & Lybrand, CPA, in Columbus, Ohio. Professor Murray has served as President of the American Society for Public Administration and the International City Management Association. He received a B.A. in History from Lincoln University, Pennsylvania, an M.G.A. in Governmental Administration from the University of Pennsylvania, and an M.A. in Economics from Eastern Michigan University. Professor Murray is a Fellow of the National Academy of Public Administration and a Board Member of the National Civic League. Professor Murray serves as the Conference Chair for the Consortium for International Management, Policy & Development and is the General Chair Emeritus.



CIMPAD CONFERENCE LEADERSHIP AND PROGRAM PLANNING COMMITTEE

PROFESSOR HARVEY WHITE, Founding Conference General Chair (USA)

Professor Harvey L. White is a Professor of Practice, University of Delaware, an accomplished scholar, experienced administrator, and distinguished public service professional. Holding a variety of high-level government and university administrative positions, Professor White has served as a City Manager, Community Development Specialist, Director of Urban and Regional Planning, Coordinator of Public Administration Degrees and as an Academic Dean. He is often engaged as a management consultant on public sector service delivery issues and has consulted, lectured and led research projects in Africa, Asia and Caribbean countries. He has expertise in program evaluation, performance management & Talent management.

Professor White has authored or co-authored five books and 60+ other publications on public sector issues. His professional activities include: editorship, *Journal of Public Management & Social Policy*; President, Nat'l Conference of Minority Public Administrators; and President, American Society for Public Administration. He is a Fellow in the National Academy of Public Administration and is founder and past Director of the Gulf Coast Ctr. for Healthy Communities where he developed collaborative partnerships with 20+ community-based organizations to address health & community development issues raising \$8+ million USD to support an array of innovative programs. He is also the founder and Past General Chair of CIMPAD. Education: University of North Carolina at Chapel Hill, Ph.D. Political Science; East Carolina University, M.S. Administrative Services; North Carolina Central University BA Political.



PROFESSOR ESTHER LANGSTON, Chief Operating Officer (USA)

Professor Esther J. Langston, MSW, PhD, LCSW is Professor Emeritus of Social Work at the University of Nevada Las Vegas and Director of the Family Support Services Division the Center of Academic Advancement and Enrichment. Professor Langston is known nationally and internationally for her publications, community work and speaking on topics of Leadership, Community Involvement, Black Women and AIDS. Her professional service includes, NASW National Board of Directors; Chair of the Legal Defense Committee; Delegate Assembly in 1996, 1999, 2002 and 2008, and President of NASW's Nevada Chapter; Treasurer & Board member for Baccalaureate Program Directors; member of the Association of Deans and Directors of Schools of Social Work; Board Member CSWE, a certified accreditation site visitor and chair; Treasurer, Las Vegas Chapter Delta Sigma Theta Sorority and a member of the Audit Committee. Professor Langston serves as the Chief Operations Officer of the Consortium for International Management, Policy, & Development.



CIMPAD CONFERENCE LEADERSHIP AND PROGRAM PLANNING COMMITTEE

MR. JOHN E. SAUNDERS, III, Treasurer (USA)

Mr. John E. Saunders, III, is Executive Director for the National Forum for Black Public Administrators (NFBPA), headquartered in Washington, D.C. The NFBPA is a national professional membership association dedicated to the advancement of Black leadership in the public sector. Mr. Saunders earned his B.A. in Business Administration from Central State University (Ohio) and a Master's Degree in Human Service Administration from Lincoln University (Pennsylvania). His additional training includes completion of executive management programs at LaSalle College, the University of Pennsylvania Wharton School and Duke University. Mr. Saunders holds a Certified Association Executive (CAE) designation from the American Society of Association Executives, is a fellow of the National Academy of Public Administration, and a Senior Fellow of the American Leadership Forum. Mr. Saunders began his career as a credit and financial analyst with Dun & Bradstreet, Inc. He served with the US Army in both Vietnam and Germany. His career with the National Urban League began in 1976 where he specialized in employment and training programs until being appointed Senior Vice President in 1978. Mr. Saunders was President and CEO of the Urban League of Greater Hartford from 1983 to 1988. In 1988, Mr. Saunders was appointed as Deputy Labor Commissioner for the State of Connecticut, a position he held until 1997. Mr. Saunders has a long history of extensive involvement in various community and civic activities including: Consortium for International Management, Policy & Development and others. Mr. Saunders is the recipient of an honorary Doctor of Laws degree from Briarwood College.



REVEREND GUILA COOPER, Secretary of the Board of Directors (USA)

Reverend Guila B. Cooper is a professional in the fields of alumni relations and fundraising. With over 25 years of experience, she has worked with non-profit organizations, faith-based and higher education institutions in Georgia, South Carolina and North Carolina in the areas of program development and evaluation, strategic planning, grant writing. Specializing in higher education alumni engagement, Reverend Cooper has worked with alumni chapters and clubs to create strategic plans crafted to align with the interests and ambitions of institutions and their alumni. In this role, she works in close concert with strategic partners across the institution and in the community to build strong and supportive constituent bases of support, plans and implements programs and events to engage alumni, and recruits alumni leadership. A graduate of Bennett College, Reverend Cooper is involved in the community through roles as an Ordained Minister, Board Member, Community Advisor and involved citizen. She continued post-baccalaureate study in Theology at Erskine University. Reverend Cooper serves at the Oak Ridge First Baptist Church and as Vice President of the Congress of Christian Education for the High Point Educational and Missionary Baptist Association, as well as on the boards of several community-based organizations. A frequent teacher and small group facilitator for congregations, her passion is discipleship. She is currently Director of Alumni Relations & Development for the School of Health Sciences at Winston-Salem State University. In this role, she spearheads development efforts by creating and executing an effective fundraising strategy, while engaging the over 5000 alumni of the school.



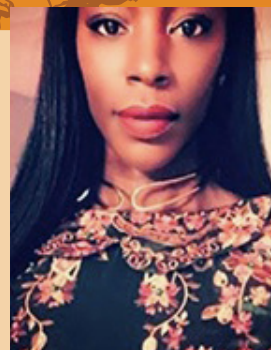
CIMPAD CONFERENCE LEADERSHIP AND PROGRAM PLANNING COMMITTEE

MS. KARYN N. ONYENEO, MS, Program Committee Chair (USA)

Ms. Karyn Onyeneho holds a Master of Science Degree in Health Informatics from George Mason University and a Bachelor of Science Degree, Magna Cum Laude, in Health Sciences and Management, from Howard University. She is currently pursuing a Doctorate Degree in Nutritional Science from Howard University. Her dissertation will focus on examining the effect of nutritional imbalance on biomarkers of genetic risk factors for Type 2 Diabetes Mellitus (T2DM) in Africans and African-Americans. Her goal is to develop sustainable, patient-centered, comprehensive nutrition interventions that help prevent or delay T2DM and empower at-risk diabetics to adopt healthy dietary patterns to help combat diabetes mortality.

She has been a public service professional in the United States Federal workforce for almost a decade and was appointed to her current position at the National Institutes of Health in 2014, where she works as a Senior Program Analyst in public policy. She has extensive experience in public service in the areas of policy, research, administration, and leadership.

Ms. Onyeneho has presented at national and regional conferences, including the CIMPAD Annual Conference at Howard University in 2016 and the Graduate Thesis Presentations at George Mason University in 2014; her presentations were: *Implementation and Utilization of eHealth Technologies* She is published and is a doctoral student at Howard University.



PROFESSOR MICHAEL P. LISCHKE, Program Committee Member (USA)

Professor Michael Lischke is 26-year veteran Administrator and Educator at Wake Forest University School of Medicine, holding the titles of Associate Dean for Continuing Medical Education, the Richard Janeway MD Distinguished Director of the Northwest Area Health Education Center, Associate Professor Family & Community Medicine, and Adjunct Professor in the Maya Angelou Center for Health Equity. Professor Lischke earned his Bachelor of Arts degree in Sociology and Masters of Public Health in Policy and Administration at Emory University and his Doctor of Education degree in Educational Administration from Temple University. Prior to his arrival at Wake Forest University School of Medicine in 1996, he served in various medical school admissions leadership roles in Philadelphia – Hahnemann University, Medical College of Pennsylvania and Alleghany University of the Health Sciences (now known as Drexel College of Medicine). He is also a Fellow of the College of Physicians of Philadelphia. Prior to his current roles at Wake Forest, he served as the Senior Assistant to the Vice President and Dean, Instructor in Medical Education, Instructor and Assistant Professor of Family & Community Medicine. Professor Lischke is well recognized in the Piedmont Triad region and across the State of North Carolina as a community leader. He has served on numerous boards and received various honors and awards.



CIMPAD CONFERENCE LEADERSHIP AND PROGRAM PLANNING COMMITTEE

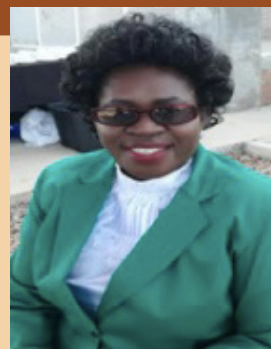
LECTURER BASHI MOTHUSI, Program Committee Member (Botswana)

Lecturer Bashi Mothusi is a Senior Lecturer of Public Administration and Head of the Department of Political and Administrative Studies at the University of Botswana. He joined the University in May 2002 as a Lecturer and holds a Ph.D. in Public Administration from Cleveland State University (CSU) in Ohio, a Master's degree from University College London (UCL) and a Bachelor's Degree from the University of Botswana. Lecturer Mothusi teaches undergraduate and post-graduate courses and is mainly interested in issues pertaining to public sector reforms and change management, local government administration, privatization and leadership.



PROFESSOR BAAKILE MOTSHEGWA, Program Committee Co-Chair (Botswana)

Professor Baakile Motshegwa is an Associate Professor in the Department of Political & Administrative Studies specializing Human Resource Management and Industrial Relations at the University of Botswana. She is the first Motswana woman to be appointed Associate professor in Public Administration in Botswana. She holds a BA in Public Administration and Political Science (University of Botswana) and M.Sc. in Human Resource Management (University of Manchester, UK). She completed her Doctorate degree in Management at the University of Newcastle in Australia in 2008. Professor Motshegwa lectures on both graduate and undergraduate courses at the University of Botswana. She has held different positions in both government and the private sector. She started her career at the Directorate of Public Service Management as a Personnel Officer but later joined the private sector. After being a Section Manager, Human Resources at the Motor Company of Botswana, she briefly worked for Bank of Botswana as Assistant Organizational & Development Manager. She later worked as Human Resource Manager in Flowtite Botswana before changing her career to academia 2001. Professor Motshegwa formed part of several programs which were successfully completed. Professor Motshegwa has facilitated several workshops. She is a member of inter-nation institutes in her profession. She was a member of the BPC Board from September 2013-October 2017 and chaired several committees of the Board, inc. the ESB Int'l Contract Evaluation Committee, 2014 and 2015.



CIMPAD CONFERENCE LEADERSHIP AND PROGRAM PLANNING COMMITTEE

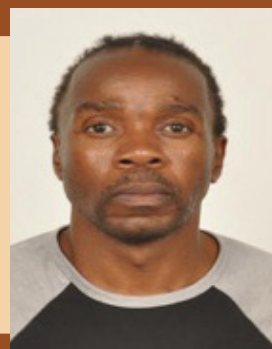
PROFESSOR DOROTHY MPABANGA, Program Committee Co-Chair (Botswana)

Professor Dorothy Mpabanga (PhD) is an Associate Professor and Director of the Center of Specialization in Public Administration and Management (CESPAM) in the department of Political and Administrative Studies, faculty of Social Sciences at the University of Botswana. Professor Mpabanga teaches at undergraduate and graduate levels, including human resource management, human resource development, public sector reforms, organizational theory and research in public policy. Professor Mpabanga possesses a vast industry experience for instance she has 11 years in government as Senior Industrial Officer (Project Analyst) and 3 years at the Central Bank of Botswana as an Economist. Professor Mpabanga's research focuses on public sector management and reforms, human resource management, human resource development, diversity management, project implementation, Monitoring & Evaluation, NGO management, Higher Education Management, ICT, Women in leadership and politics, governance and democracy. Professor Mpabanga has publications in various book chapters and journal articles including the Routledge. She is affiliated to associations such as ILA and the Society for Human Resource Management. Education: PhD in HRM from the University of Strathclyde, Glasgow, Scotland; MSc, Nat'l Development & Project Planning & Appraisal from University of Bradford, UK; and BA Degree in Public Administration & Sociology from University Botswana.



PROFESSOR EMMANUEL BOTLHALE, Program Committee Member (Botswana)

Professor Emmanuel Botlhale is an Associate Professor in Public Administration in the Department of Political and Administrative Studies in the University of Botswana. Professor Botlhale's teaching and research interests are: public finance, financial administration; project management; public governance; electoral governance; and research methods. Professor Botlhale is a member of the University of Botswana Democracy Research Project.



CIMPAD CONFERENCE LEADERSHIP AND PROGRAM PLANNING COMMITTEE

PROFESSOR DAVID NORRIS, Vice Chancellor, University of Botswana

Professor David Norris holds a PhD Degree in Quantitative Genetics and Animal Breeding from the Michigan State University, Michigan, USA. He read for his MSc. in Animal & Forage Science at the University of Reading (UK). He holds a BSc in Biology & Physics obtained from the University of Botswana. Professor. Norris has also attended a number of leadership and professional programmes. He is an experienced leader, researcher and lecturer, having served in different capacities in Botswana, the United States of America (USA) and South Africa. Prior to joining the University of Botswana, he was the Deputy Vice-Chancellor responsible for Research and Innovation at the Botswana International University of Science and Technology (BIUST). Before serving as BIUST, he was Director of the School of Agricultural & Environmental Sciences at the University of Limpopo, South Africa. He has held a number key positions at the University of Limpopo; he joined as senior lecturer and rose through the ranks to full Professor. He has also lectured at Austin Peay University, USA, and worked for the Government of Botswana (Ministry of Agriculture) as Senior Research Officer. Professor Norris has published extensively in refereed journals and conference proceedings. He has supervised and co-supervised a number of Masters and PhD Students, as well as serving as an external examiner for various regional and overseas universities.



PROFESSOR DAVID SEBUDUBUDU, Deputy Vice Chancellor, Academic Affairs, University of Botswana

Professor David Sebudubudu is a Professor of Political Science, and Dean of the Faculty of Social Sciences, University of Botswana. He is currently Acting Deputy Vice Chancellor, Academic Affairs. He served as Head of the Department of Political and Administrative Studies (PAS), University of Botswana, from May 19, 2009 to June 30, 2015. He was the coordinator of the Democracy Research Project (DRP), University of Botswana, from 2007 to 2012. Professor Sebudubudu obtained his BA in Public Administration and Political Science from the University of Botswana, and an MA and PhD in Politics, both from the University of Leeds, England. He teaches at both undergraduate and graduate levels. His research interests are in the state and democracy, civil society, political corruption, ethics and accountability, African politics, debates about development, and the wider political economy. He has published widely, and some of his publications are in Taiwan Journal of Democracy, African Review, Leadership, Journal of Contemporary African Studies (JCAS), Afrika Spectrum, South African Journal of International Affairs, Politeia: South African Journal for Political Science and Public Administration, International Journal of African Development, Pula: Botswana Journal of African Studies and many others.



CONFERENCE CO-HOST

CONSORTIUM FOR INTERNATIONAL MANAGEMENT, POLICY AND DEVELOPMENT



This is the 11th conference of the Consortium for International Management, Policy and Development (CIMPAD). The mission of CIMPAD is to strengthen and promote public sector leadership and management in the sustainable development of communities throughout the African Diaspora. This mission is achieved via the exchange of research and knowledge, ideas and proposals, experiences, and best practices among public/private professionals, NGOs and academicians. This year, CIMPAD partnered with the University of Botswana and the Centre for Specialization in Public Administration and Management (CESPAM) to bring together an experience in various thematic plenary areas, which include: Tertiary Education, Research Science, and Technology in Botswana; Reflections on Achievements and Possible Areas of Improvements; Combatting Disease Epidemics; Online Teaching and Learning; Grants-in-Aid Partnerships; the Importance of Statistical Data in Government Programs Administration; and Social Media and Cultural Impacts on the Conduct of Government's Business

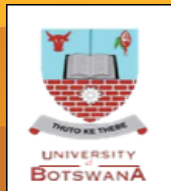
In 2016, the CIMPAD international conference was held in Washington, DC at Howard University. The conference theme, "Promoting Collaborative Partnerships for the Sustainability of Africa and the Diaspora", brought together a dynamic group of academicians, industry representatives, local and state government representatives, NGOs, and others and provided a vehicle to promote the CIMPAD mission: "To inspire and promote collaborative working relationships towards the advancement of knowledge in public administration, public management, public policy and leadership development, among practitioners and academicians in various African countries and the diaspora". The conference provided exposure to a variety of paper presentations and discussions. The topics included the healthcare system of the Turks and Caicos Islands, global health issues and prevention collaboration, African diaspora in North America, implementing the utilizing eHealth technologies to improve health outcomes, analysis of national vs local government implementation of public programs in Africa, and optimizing Africa's access to strategic human talent.

The organization has held conferences in Namibia, Zambia, South Africa, Ethiopia, Ghana, Liberia, and Washington, DC, USA. In 2015, the CIMPAD international conference was held in Livingstone, Zambia. The conference theme, "Ideals and Practice of Effective Governance in Sub-Saharan Africa", focused on effective governance in Sub-Saharan Africa. At the theoretical level, speakers and presenters explored challenges and issues related to building effective and efficient governmental and nongovernmental institutions. At the practical level, the conference provided information about the application of best practices in pursuit of effective governance in an African context. The conference provided exposure to a variety of paper presentations and discussions. The topics included Economic Development, Performance Management, Civil Society and Governance, and Public Health.

CONSORTIUM FOR INTERNATIONAL MANAGEMENT, POLICY AND DEVELOPMENT

CONFERENCE CO-HOST

UNIVERSITY OF BOTSWANA - COLLEGE OF SOCIAL SCIENCES -
DEPARTMENT OF POLITICAL AND ADMINISTRATIVE STUDIES



The University of Botswana, popularly known as UB, was established in 1982 as the first institution in Botswana. The university has three campuses: one in the capital city, Gaborone one in Francistown, and another in Maun. The university is divided into six faculties: Business, Education, Engineering, Humanities, Science, and Social Sciences.

The Department of Political and Administrative Studies is a Department of the Faculty of Social Sciences mandated by offering a Bachelor of Arts (Social Sciences) in either public administration or political science and combined major or minor programs with other social science disciplines. Through its Southern African Development Community (SADC), Centre of Specialization in Public Administration and Management (CESPAM), it offers the Master of Public Administration as well as Short-Term Executive Programs (STEPs). Dr. Bashi Mothusi is the Head of the Department.

UB began as a part of a larger university system known as UBBS, or the University of Bechuanaland (Botswana), Basotoland (Lesotho), and Swaziland; which was founded in 1964 to reduce the three countries' reliance on tertiary education in apartheid-era South Africa.

CONFERENCE PARTNER



BACKGROUND

The Institute for Local Government Management of South Africa (ILGM) was formally established on 19 January 1997. The ILGM was born out of the erstwhile Institute of Town Clerks of Southern Africa (ITC) and the more recent Institute for Municipal Management (IMM). This was after protracted negotiations between the National Executive Council of the latter body and the National Working Committee representing the interests of the then emerging managers in local government. Other key players in local government also took part in the negotiations, thereby making the process inclusive and extremely consultative.

The negotiations led to an agreement which culminated in the formation of the all-inclusive professional body the ILGM. From the onset, the principles of accessibility, democracy, transformation, professionalism and representativity guided the negotiation process. These principles were later enshrined in the constitution of ILGM.

VISION

The ILGM aims to be the center of excellence of local government management in South Africa and Africa.

MISSION

To promote excellence in local government management through the development and capacitation of managers in the sector and through lobbying of stakeholders and advocacy.

MOTTO

Developing and sustaining excellence in local government management

STRATEGIC OBJECTIVES

The Institute developed a Five Year (2005 – 2010) Strategic Plan with four (4) Strategic Objectives, namely:

1. Develop organizational and institutional capacity of the ILGM
2. Build the institute as a knowledge resource and development practitioner in local government;
3. Promote capacity building initiatives aimed at enhancing local government management; and
4. Enhance the profile of the organization amongst its stakeholders through effective communication

The Institute offers benefits to Private Sector companies who participate in its Corporate Partnership Program.

CONFERENCE PARTNER

CENTRE FOR SPECIALIZATION IN PUBLIC ADMINISTRATION AND MANAGEMENT (CESPAM)



CESPAM was established in 2000 and mandated to promote training and development opportunities for Southern African Development Community (SADC) public sector, both short-term and long-term training. CESPAM's mandate is to educate leaders in the SADC public sector in best practice in public administration and management to empower them to lead and manage their respective organizations efficiently and effectively.

CESPAM aims at:

- Providing quality training in public administration and management
- Improving organizational performance primarily in the public sector
- Contributing toward improved performance of the economies of the SADC member states
- Improving the skills of practicing administrators and managers
- Increasing the stock of trained public sector personnel in the region
- Ensuring a continuing supply of new highly trained personnel primarily in public administration and management
- Supporting SADC implement the SADC Regional Indicative Strategic Development Plan (RISDP).

In view of the ever-changing circumstances in administrative and managerial roles and styles, there is need for regular upskill of the human resource function to strategically cope with the shifting landscape. CESPAM is dedicated to improving efficiency and effectiveness of the public and private sector of SADC member states and the African continent. Through quality training in public administration and management, we will empower you to be an innovative, flexible and forward-thinking leader of the 21st century.

CONFERENCE PARTNERS

NATIONAL DEPARTMENT OF LOCAL GOVERNMENT (WESTERN CAPE GOVERNMENT)



The Department of Local Government supports and strengthens the capacity of municipalities to manage their own affairs. Our Vision is to have developmental and well-governed Municipalities with integrated, sustainable and empowered communities. The Western Cape Government creates laws for and provides services to the people of the Western Cape. We work closely with the national government and municipalities in the Western Cape to ensure that the citizens of the province have access to the services, facilities and information they need. We are committed to delivering an open opportunity society for all.

SOUTH AFRICAN LOCAL GOVERNMENT ASSOCIATION (SALGA)



South African Local Government Association is an autonomous association of all 257 South African local governments, comprising of a national association, with one national office and nine provincial offices. Membership of the association is voluntary. SALGA accounts to its members in terms of the SALGA Constitution (as amended in 2016) and its Governance Framework regulating its structures and mandating processes. The organisation has a National Executive Committee comprised of elected councillors (primarily mayors and office bearers in municipalities) that is responsible for the affairs of the organisation between National Conferences and Members' Assemblies, which are the highest and second highest decision-making bodies of the association respectively. Its administration is headed by a Chief Executive Officer. SALGA is listed as a Schedule 3A public entity and is therefore accountable for its revenue and expenditure in terms of the Public Finance Management Act of 1999. It is called to account to Parliament annually on its performance and expenditure as a consequence of its listing in terms of this Act. SALGA has set out its role to represent, promote and protect the interests of local governments and to raise the profile of local government, amongst other objectives. SALGA is funded through a combination of sources, including primarily membership fees (81%), donations from the donor community for specific projects (6%), other sources (9%) and a small annual allocation from the national fiscus (4%). Since its establishment, SALGA has endeavoured to bring focus to its mandate of supporting local government transformation in a complex environment, characterised by a highly diverse membership-base of municipalities. In terms of its amended Constitution, SALGA is a unitary body that consists of a national association and nine provincial offices. SALGA has a clear strategic role to play in representing the interests of local government within the system of government as a whole and supporting its members to fulfil their developmental obligations, on the other. As a full partner in government, SALGA is expected to be an active participant in the intergovernmental relations (IGR) system, to provide common policy positions on numerous issues and to voice local government interests, as well as provide solutions to the challenges facing local government more generally.

CONSORTIUM FOR INTERNATIONAL MANAGEMENT, POLICY AND DEVELOPMENT

CONFERENCE PARTNERS

UNIVERSITY OF THE WITWATERSRAND JOHANNESBURG



The University of the Witwatersrand, Johannesburg (Wits) is a remarkable university that is internationally distinguished for its excellent research, high academic standards and commitment to social justice. Our partners, networks and relationships serve as catalysts for the great ideas that help us to make the impossible, incredible. We invite you to join us on our extraordinary journey to effect meaningful change in society and pave the way for a bright future for generations to come.

SOUTH AFRICAN LOCAL GOVERNMENT ASSOCIATION (SALGA)



The University of Pretoria (UP) has seven campuses as well as a number of other sites of operation, such as the Pretoria Academic Hospital. Central administration is located at the Hatfield Campus. UP offers more than 1 800 academic programmes in two of the official languages, namely Afrikaans and English. (Some programmes and modules are offered only in English.) In 1996, the University of Pretoria became the university with the highest research output in South Africa and we have maintained this status. The University of Pretoria celebrated its Centenary in 2008. The academic programmes of the University are offered in nine faculties, as well as a business school. The faculties comprise a total of 140 departments and 85 centres, institutes and bureaus. UP is at the forefront of tertiary education in the country and collaborates with world-class partners to ensure continued excellence in learning and teaching.

CONFERENCE PARTNER

UNIVERSITY OF JOHANNESBURG



Vibrant, multicultural and dynamic, the University of Johannesburg (UJ) shares the pace and energy of cosmopolitan Johannesburg, the city whose name it carries. Proudly South African, the university is alive down to its African roots, and well-prepared for its role in actualising the potential that higher education holds for the continent's development. UJ has transformed into a diverse, inclusive, transformational and collegial institution, with a student population of over 50 000, of which more than 3000 are international students from 80 countries. This makes UJ one of the largest contact universities in South Africa (SA) from the 26 public universities that make up the higher education system.

The phenomenal success story of the University is one that has surprised critics and won over sceptics. Since its establishment in 2005, and under the bold and visionary leadership of its first Vice Chancellor and Principal, Professor Ihron Rensburg, the University has had a remarkable journey with major accomplishments in transformation, equity, access, and Pan African and global excellence.

The vision of the UJ is to be “an international University of choice, anchored in Africa, dynamically shaping the future”. The mission can be described as follows: “inspiring its community to transform and serve humanity through innovation and the collaborative pursuit of knowledge”. These are underpinned by four values, namely: imagination, conversation, regeneration and ethical foundation.

The six strategic objectives provide a focused means for realising the Vision, Mission and Values of the University as set out above. They further represent a re-working of the original UJ Strategic Thrusts 2020 in the context of a wider positioning of the University as “The Pan-African” Centre for Critical Intellectual Inquiry, with the primary goal of achieving global excellence and stature. The six strategic objectives are:

- Excellence in Research and Innovation;
- Excellence in Teaching and Learning;
- An International Profile for Global Excellence and Stature;
- Enriching Student-Friendly Learning and Living Experience;
- Active National and Global Reputation Management; and
- Fitness for Global Excellence and Stature (GES)

CIMPAD CONFERENCE LEADERSHIP AND PROGRAM PLANNING COMMITTEE

CIMPAD OFFICERS:

Professor Peggy Valentine, EdD, President and Conference General Chair (USA)

Professor Berhanu Mengistu, PhD, Vice President (USA)

Professor Sylvester Murray, MGA, MA, Conference General Chair Emeritus (USA)

Professor Harvey White, PhD, Founding Conference General Chair (USA)

Professor Esther Langston, PhD, Chief Operating Officer (USA)

Mr. John Saunders, III, MS, Treasurer (USA)

Reverend Guila Cooper, Secretary to the Board of Directors

USA PROGRAM PLANNING COMMITTEE:

Professor Peggy Valentine, EdD, Conference General Chair

Professor Sylvester Murray, MGA, MA, Conference Chair

Professor. Harvey White, PhD, Founding Conference General Chair

Ms. Karyn N. Onyeneho, MS, Program Committee Chair

Reverend Guila Cooper, Secretary to the Board of Directors

Mr. John Saunders, III, MS, Treasurer

Professor Esther Langston, PhD, Chief Operating Officer

Professor Michael P. Lischke, PhD, Program Committee Member

BOTSWANA PROGRAM PLANNING COMMITTEE:

Professor Baakile Motshegwa, PhD, Program Committee Co-Chair

Professor Dorothy Mpabanga, PhD, Program Committee Co-Chair

Professor Emmanuel Botlhale, PhD, Program Committee Member

Professor Bashi Mothusi, PhD, Program Committee Member



WINSTON-SALEM
STATE UNIVERSITY

School of Health Sciences



WSSU AND THE SCHOOL OF HEALTH SCIENCES
COMMEND DEAN PEGGY VALENTINE, REVEREND GUILA COOPER AND
THE MEMBERS OF CIMPAD. WE WISH THEM MUCH SUCCESS AS THEY
CELEBRATE THE 11TH INTERNATIONAL CIMPAD CONFERENCE.

NOTES



CONSORTIUM FOR INTERNATIONAL MANAGEMENT, POLICY AND DEVELOPMENT

In Partnership with

University of Botswana College of Social Sciences – Department of Political and Administrative Studies

Centre for Specialization in Public Administration and Management (CESPAM)

National Department of Local Government (Western Cape Government)

South African Local Government Association (SALGA)

Institute for Local Government Management (ILGM)

University of the Witwatersrand, Johannesburg

University of Johannesburg

University of Pretoria

Botswana Investment and Trade Centre

Botswana Post